

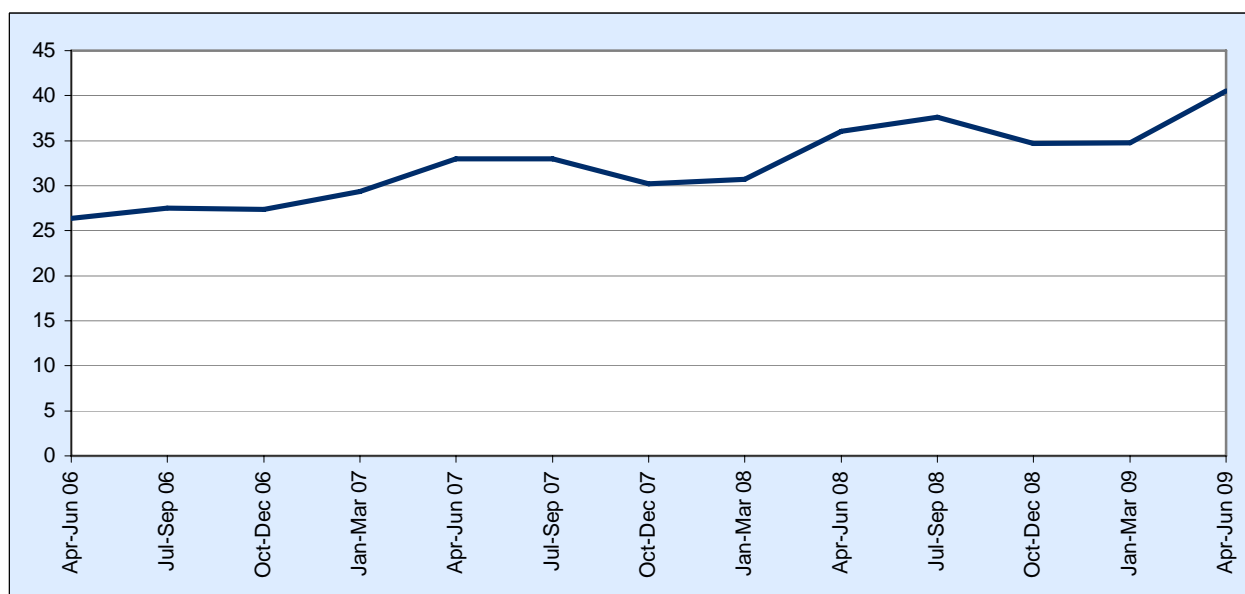
Municipal Waste Management Release, April-June 2009

This release covers provisional quarterly results from the WasteDataFlow system for April to June 2009 (Quarter 1, 2009-10). The results are provisional because final balances between waste collected and waste disposed of are not calculated until the end of the year. Additional quarterly data is available on StatsWales. Full annual results for 2009-10 will be published in October 2010.

Key Results

- The share of municipal waste recycled, reused and composted in Wales has been on a generally upward trend, rising from 26 per cent in April to June 2006 to 41 per cent in April to June 2009.
- The total amount of municipal waste produced in Wales has been steadily decreasing, falling from 467 thousand tonnes in April to June 2006 to 427 thousand tonnes in April to June 2009.
- The residual household waste produced in Wales has decreased sharply, falling from 109 kilograms per person in April to June 2006 to 77 kilograms per person in April to June 2009.

Chart 1 – Percentage of municipal waste recycled or composted, Wales



Source: WasteDataFlow

Contact: Tel: 029 2082 6399 E-mail: stats.environment@wales.gsi.gov.uk **Next Update:** January 2009 (provisional)



Table 1: Combined municipal waste dry recycling and composting rates, by local authority

Local Authority	Apr-Jun 06	Apr-Jun 07	Apr-Jun 08	Apr-Jun 09	Percentage
					Percentage point change (2008 to 2009)
Isle of Anglesey	22	34	45	53	7
Gwynedd	24	30	33	40	8
Conwy	24	41	45	43	-2
Denbighshire	26	27	34	54	20
Flintshire	36	33	41	44	2
Wrexham	27	44	43	43	0
Powys	37	44	38	42	4
Ceredigion	37	47	41	51	10
Pembrokeshire	25	31	33	39	6
Carmarthenshire	26	29	32	41	9
Swansea	32	33	33	38	5
Neath Port Talbot	23	32	31	35	4
Bridgend	30	35	38	32	-5
Vale of Glamorgan	30	34	39	42	3
Cardiff	15	26	34	41	8
Rhondda Cynon Taff	23	32	34	35	1
Merthyr Tydfil	23	24	28	35	8
Caerphilly	26	27	34	39	5
Blaenau Gwent	21	15	21	27	6
Torfaen	22	37	42	47	5
Monmouthshire	34	37	41	42	1
Newport	29	36	38	40	2
Rural (a)	28	35	37	44	6
Urban (a)	26	33	37	41	4
Valley (a)	24	30	34	36	2
Wales	26	33	36	41	5

Source: WasteDataFlow

(a) See Key Quality Information for definition.

- The share of municipal waste recycled, reused and composted in Wales has been on a generally upward trend, rising from 26 per cent in April to June 2006 to 41 per cent in April to June 2009.
- The local authority with the highest dry recycling and composting rate in April to June 2009 was Denbighshire (54 per cent). This has increased from 34 per cent for the same period in 2008.
- Rural local authorities have generally had the highest recycling/composting rate for the April to June quarter over the last four years whilst valley local authorities had the lowest.

Table 2: Municipal waste dry recycling and composting rates, by local authority

Local Authority	Percentage					
	Recycling			Composting		
	Apr-Jun 08	Apr-Jun 09	Percentage point change (2008 to 2009)	Apr-Jun 08	Apr-Jun 09	Percentage point change (2008 to 2009)
Isle of Anglesey	21	22	1	24	30	6
Gwynedd	18	19	0	14	22	7
Conwy	22	24	2	23	19	-4
Denbighshire	17	30	13	17	24	7
Flintshire	20	22	2	21	22	0
Wrexham	22	20	-1	21	23	1
Powys	23	22	-1	15	20	5
Ceredigion	32	40	8	10	12	2
Pembrokeshire	24	29	5	9	10	1
Carmarthenshire	21	25	4	11	16	5
Swansea	22	21	-1	11	17	6
Neath Port Talbot	20	23	3	11	12	1
Bridgend	22	22	1	16	10	-6
Vale of Glamorgan	25	25	0	14	17	3
Cardiff	20	20	1	14	21	7
Rhondda Cynon Taff	23	26	3	11	9	-2
Merthyr Tydfil	19	20	1	8	15	6
Caerphilly	25	29	4	9	10	1
Blaenau Gwent	16	20	4	5	7	2
Torfaen	23	24	1	19	23	4
Monmouthshire	16	16	0	25	26	0
Newport	20	22	2	17	18	1
Rural (a)	22	25	3	16	19	3
Urban (a)	21	21	0	16	20	4
Valley (a)	22	25	3	12	12	0
Wales	21	23	2	15	17	3

Source: WasteDataFlow

(a) See Key Quality Information for definition.

- The municipal waste dry recycling rate for Wales in April to June increased from 21 per cent in 2008 to 23 per cent in 2009.
- The municipal waste composting rate for Wales in April to June increased from 15 per cent in 2008 to 17 per cent in 2009.
- Rural and valley local authorities had the highest dry recycling rate (25 per cent) in April to June 2009, however, urban local authorities had the highest composting rate (20 per cent) over the same period.

Table 3: Total municipal waste arisings, by local authority

Local Authority	Thousand tonnes				
	Apr-Jun 06	Apr-Jun 07	Apr-Jun 08	Apr-Jun 09	Percentage change (2008 to 2009)
Isle of Anglesey	12.9	11.6	11.5	11.5	-1
Gwynedd	21.6	21.1	20.3	20.5	1
Conwy	20.6	22.2	19.2	17.1	-11
Denbighshire	13.2	12.5	12.6	11.3	-11
Flintshire	24.0	24.6	22.6	22.3	-1
Wrexham	22.5	21.7	20.8	20.2	-3
Powys	22.0	22.1	21.5	21.2	-1
Ceredigion	10.2	11.6	9.9	11.5	16
Pembrokeshire	19.2	18.6	17.1	16.7	-2
Carmarthenshire	25.8	24.7	23.3	21.0	-10
Swansea	38.3	37.1	35.0	34.1	-2
Neath Port Talbot	24.3	22.5	20.7	21.7	5
Bridgend	21.1	21.9	21.6	19.3	-11
Vale of Glamorgan	17.1	16.3	16.5	16.4	-1
Cardiff	48.1	48.1	47.1	47.1	0
Rhondda Cynon Taff	32.5	31.4	31.0	30.2	-3
Merthyr Tydfil	8.1	8.5	8.5	8.0	-6
Caerphilly	26.5	25.6	27.0	25.6	-5
Blaenau Gwent	11.9	10.3	9.7	8.5	-12
Torfaen	13.2	12.7	12.4	12.4	1
Monmouthshire	14.2	13.9	13.1	12.6	-4
Newport	20.0	18.7	18.2	17.5	-4
Rural (a)	176.8	174.6	165.2	159.9	-3
Urban (a)	152.9	150.2	143.7	141.3	-2
Valley (a)	137.6	132.9	130.9	125.7	-4
Wales	467.3	457.7	439.8	426.9	-3

Source: WasteDataFlow

(a) See Key Quality Information for definition.

- The total amount of municipal waste produced in Wales has been steadily decreasing, falling from 467 thousand tonnes in April to June 2006 to 427 thousand tonnes in April to June 2009.
- The amount of municipal waste produced has decreased or showed little change in all local authorities since the same quarter in 2008 with the exception of Ceredigion, which has increased by 16 per cent.
- Rural local authorities have produced the highest amount of municipal waste in April to June in each of the last four years. However, the average amount of municipal waste produced per local authority has been highest in urban areas.

Table 4: Residual household waste produced per person, by local authority (a)

Local Authority	Kilograms per person					Percentage change (2008 to 2009)
	Apr-Jun 06	Apr-Jun 07	Apr-Jun 08	Apr-Jun 09		
Isle of Anglesey	127	101	91	78	-15	
Gwynedd	136	94	92	78	-15	
Conwy	149	75	69	66	-4	
Denbighshire	77	69	84	53	-37	
Flintshire	94	95	76	66	-13	
Wrexham	106	80	77	73	-6	
Powys	103	93	100	81	-19	
Ceredigion	115	84	79	85	7	
Pembrokeshire	110	96	88	79	-11	
Carmarthenshire	121	97	84	65	-23	
Swansea	97	92	87	80	-9	
Neath Port Talbot	136	116	106	105	-1	
Bridgend	96	96	94	92	-2	
Vale of Glamorgan	97	87	81	77	-6	
Cardiff	107	95	84	78	-7	
Rhondda Cynon Taff	116	86	76	83	8	
Merthyr Tydfil	121	120	114	95	-16	
Caerphilly	92	89	90	79	-12	
Blaenau Gwent	129	120	106	86	-19	
Torfaen	113	89	80	67	-16	
Monmouthshire	100	94	82	76	-8	
Newport	94	78	73	68	-7	
Rural (b)	114	89	85	73	-14	
Urban (b)	101	90	81	74	-8	
Valley (b)	112	98	91	86	-5	
Wales	109	92	86	77	-10	

Source: WasteDataFlow

(a) Residual waste is the amount of waste that is not sent for reuse or recycling or composting. This is calculated by deduction, i.e. the total amount of household waste minus household waste sent for reuse, recycling and composting.

(b) See Key Quality Information for definition.

- The residual household waste produced in Wales has decreased sharply, falling from 109 kilograms per person in April to June 2006 to 77 kilograms per person in April to June 2009.
- The residual household waste per person has fallen in all local authorities with the exception of Ceredigion since the same quarter in 2008, with Denbighshire showing the largest decrease.
- Rural local authorities produced the highest amount of residual household waste per person in April to June 2006, but produced the lowest amount in April to June 2009.

Key Quality Information

1. In Wales municipal waste includes material from domestic and commercial properties that is collected by, or on behalf of the 22 local authorities. Results for the amount and type of waste collected and how it is disposed of are collected through the WasteDataFlow system.

The regulations in Wales require that local authorities submit their data to WasteDataFlow each quarter. Each quarterly summary is therefore based on returns from all 22 authorities. It is also important to note there are in-seasonal differences between the data for each quarter and each Local Authority. These differences may be due to the fact that some Local Authorities have a higher tonnage in July to September because of the additional wastes produced as a result of an influx of tourists. The composting figures are usually lower in quarters 3 and 4 due to the lower amounts of garden waste generated outside the growing season. Local authorities also introduce new services, for example the collections of food waste, so the composting figures for that quarter will be higher than the previous quarter. Taking all of these factors into account please use a certain degree of caution when carrying out comparisons between successive quarters and each Local Authority. For this reason a comparison is only presented for April to June (Quarter 1) of each year in this release.

Given that the quarterly results are provisional this release tries to strike a balance between publishing early results and waiting for more secure data. As the series develops we would welcome feedback about how well we achieve this balance.

2. Residual waste is the amount of waste that is not sent for reuse or recycling or composting and which is sent to landfill or energy from waste. Residual household waste is the total amount of household waste minus household waste sent for reuse, recycling and composting.
3. The residual household waste per person is calculated by dividing the residual household waste by the population. Population figures are obtained through the Office for National Statistics Mid Year Estimates. The 2008 Mid Year Estimates have been used for April to June 2009. These figures will be revised when the 2009 Mid Year Estimates become available in August 2010.
4. A percentage point change is the difference between two percentages. A percentage change represents the relative change between two values.
5. Figures for April to June 2009 are provisional and are subject to revision once end of year results have been calculated.
6. Abandoned vehicles, rubble, incinerator residues and matter from beach cleansing are excluded from all results in this release. Results for these items are included in the annual municipal waste management report.
7. In this release we have grouped the local authorities to help compare similar local authorities. These groups have been selected specifically for waste management reasons in discussion with Welsh local authorities.

Rural authorities: Carmarthenshire, Ceredigion, Conwy, Denbighshire, Gwynedd, Isle of Anglesey, Monmouthshire, Pembrokeshire, Powys, Vale of Glamorgan

Urban authorities: Cardiff, Flintshire, Newport, Swansea, Wrexham

Valleys authorities: Blaenau Gwent, Bridgend, Caerphilly, Merthyr Tydfil, Neath Port Talbot, Rhondda Cynon Taff, Torfaen

8. In the tables where figures have been rounded to the nearest final digit, the constituent items may not add up exactly to the total.
9. This data is outside the scope of National Statistics.